



ufi  
Approved  
Event

**koplas** Related Industry Exhibition  
Simultaneously Held!

# ***INTERMOLD KOREA 2027***

**THE 28th KOREA INT'L DIE-MOLD &  
RELATED INDUSTRY EXHIBITION**

**March 2 ▶ 5, 2027 KINTEX**  
[www.intermoldkorea.com](http://www.intermoldkorea.com)

*The Future of Manufacturing,  
Driven by K-Mold!*

# **D & M**

Organizer



Sponsors





# WHY?

## INTERMOLD KOREA 2027



The World's First Die & Mold Exhibition  
est. 1981



The World's Second-Largest,  
Korea's Only Die & Mold Specialized Exhibition



Biennial Exhibition Optimized for New Product  
Launch Cycles



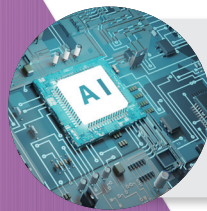
A Global Die & Mold Leader  
Korea ranks 4th in global production and 2nd in exports



A Core Platform for Root Industries

## A Global Platform

Connecting **K-Mold**, Related Industries,  
and the AX Future of Manufacturing



AI·AX Transformation of  
the Die & Mold Industry  
Digital & AI Transformation



Technological Innovation &  
Convergence with  
High-Tech Industries



Diversification and Resilience  
in Supply Chains



# Exhibition Overview

- Name of Exhibition** ***INTERMOLD KOREA 2027***  
The 28th Korea Int'l Die·Mold & Related Industry Exhibition
- Theme** Future Value Creation for the Die & Mold Industry Driven by AI & AX
- Period** March 2(Tue) ~ 5(Fri), 2027(4 days)
- Venue** **KINTEX** Exhibition Center 1(2~3 hall)
- Scale** 450 companies from 25 countries
- Organizer** Korea Die & Mold Industry Cooperative(**KODMiC**)
- Sponsors** Ministry of Trade, Industry and Resources, Ministry of SMEs and Startups, Korea Federation of SMEs, Korea SMEs and Startups Agency, KOTRA(Korea Trade-Investment Promotion Agency), KITECH(Korea Institute of Industrial Technology)
- Concurrent Events**
  - Inviting foreign & domestic buyers
  - International Die & Mold technology conference and academic seminars
  - Seminars on Die & Mold and related technologies
  - 3D Printing Conference and Technical Seminar
- Co-located with** **koplas** (Korea International Plastics+Rubber Show)

# INTERMOLD KOREA 2025 Show Report

 **20** countries

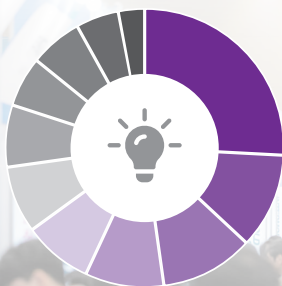
 **344** exhibitors

 **42,238** visitors  
\*AKEI certified



### Exhibitor

- 33% Mold · Parts · Materials
- 15% Machine Tools
- 12% 3D printing & additive manufacturing
- 9% Precision Measurement Instruments
- 5% CAD/CAM/CAE
- 5% Tools
- 3% Fundamental Process Technology
- 18% Others



### Fields of interest

- 26% Mold · Parts · Materials
- 11% Machine Tools
- 11% 3D printing & additive manufacturing
- 9% CAD/CAM/CAE
- 8% Precision Measurement Instruments
- 8% Tools
- 7% Machine Parts
- 6% Metal processing equipment
- 6% Forming machinery
- 5% Intelligent Process Technology
- 3% Fundamental Process Technology



## Exhibits

### Die & Mold and Related Equipment Pavilion

The die & mold industry is a key foundation of manufacturing, enabling mass production in sectors such as automotive, electronics, batteries, and medical devices, and supporting national manufacturing competitiveness and industrial security.



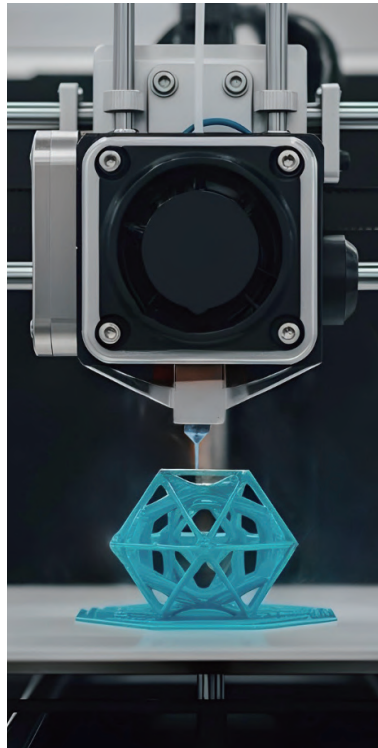
#### All Products Related to the Die & Mold Industry

- Die & Mold · Parts · Materials
- Tools      - Machine Tools
- Metal Processing & Cutting Machine
- Automatic Machines
- Precision Measuring instruments
- Injection Molding Machine
- CAD/CAM/CAE



### Additive Manufacturing Pavilion

INTERMOLD KOREA, a hub for Additive Manufacturing (3D Printing), is a leading information and industry platform for industrial 3D printing and production professionals across die & mold and various application industries.



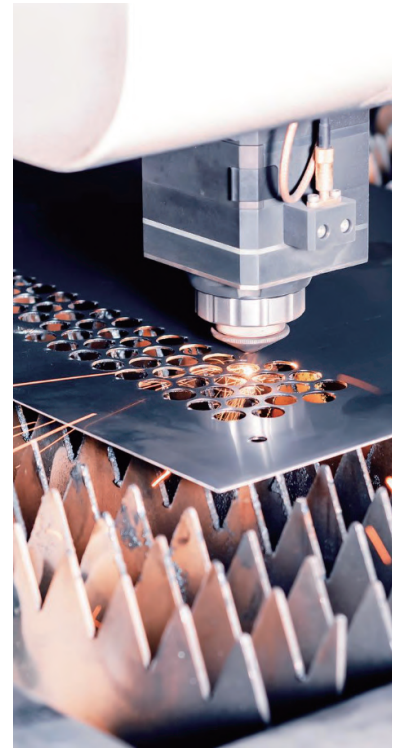
#### All product items related to the 3D printing industry

- Additive manufacturing technologies and equipment
- AM materials
- Hardware and components
- Software solutions
- Educational & research institutions



### Fundamental Process Technology Pavilion

The die and mold industry is one of the core foundational manufacturing sectors. At the same time, it is closely interconnected with other foundational industries, complementing one another to build the technological competitiveness and industrial ecosystem of the manufacturing sector as a whole.



#### Casting & Forging

Casting, Die Casting, Forging, Materials

#### Surface Processing

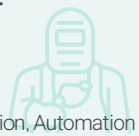
Measurement, Pre-treatment, Nano/Micro, Plasma/Laser, Coating

#### Heat Treatment

Thermal Spray

#### Welding

Smart Welding, Inspection, Automation





## Hall Lay-out

### Intelligent Process Technology Pavilion

Intelligent process technologies integrate core technologies of the Fourth Industrial Revolution - such as AI, big data, and IoT - into manufacturing processes, enabling digital transformation (DX) and advancing smart manufacturing.

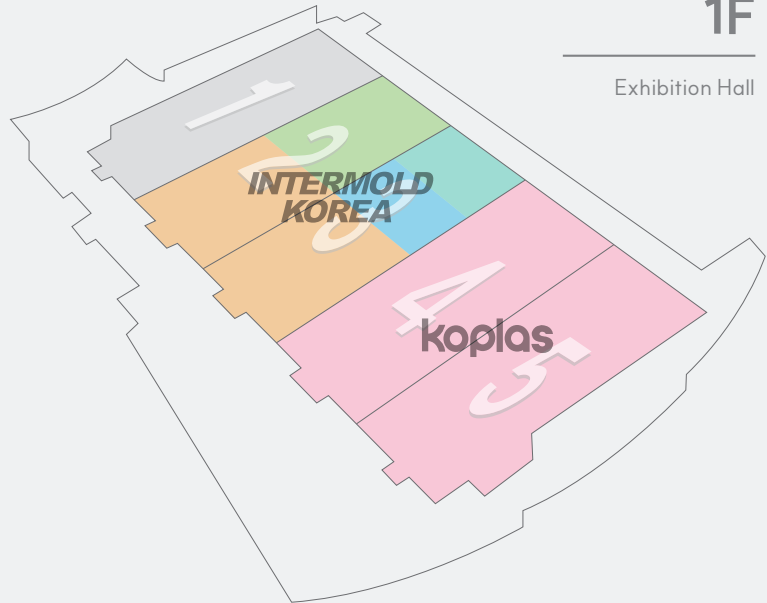


- Robotics & Automation
- Smart Sensors & Vision
- AI-Based Process Control
- Engineering Design & Simulation
- Digital Twin & Virtual Processes
- Manufacturing Data & Platforms
- Smart Inspection & Predictive Maintenance
- Process Integration & Smart Factory



1F

Exhibition Hall



-  Die & Mold and Related Equipment Pavilion
-  Intelligent Process Technology Pavilion
-  Additive Manufacturing Pavilion
-  Fundamental Process Technology Pavilion

### Total Combined Exhibition Scale

Venue : KINTEX Exhibition Center I, Halls 2~5 (4 halls)

Scale : 35 countries, 2,800 booths

This large-scale convergence exhibition covers the entire product lifecycle—from design to final products—and showcases collaboration between traditional manufacturing industries and advanced high-tech industries.

### KOPLAS 2027 to be held concurrently

350 Exhibitors / 1,400 Booths (Expected)

Held at KINTEX Exhibition Center I, Halls 4-5

Fully open exhibition halls, allowing visitors to experience both exhibitions seamlessly

# Application

## Application

Applications are accepted online  [www.intermoldkorea.com](http://www.intermoldkorea.com)

## Application Period

- Until September 30, 2026
- Early-bird application : until June 30, 2026
- Applications are accepted on a first-come, first-served basis and will close once booth space is fully allocated.

## Participation Fee

(Unit : per booth)

Classification	Raw-space	Shell-scheme (3m x 3m)
Cost	US\$ 2,800	US\$ 3,600

- ※ 1) The shell-scheme booth includes a booth installation fee of US\$ 800.
- 2) Special discount : Early bird 10% before June 30, 2026

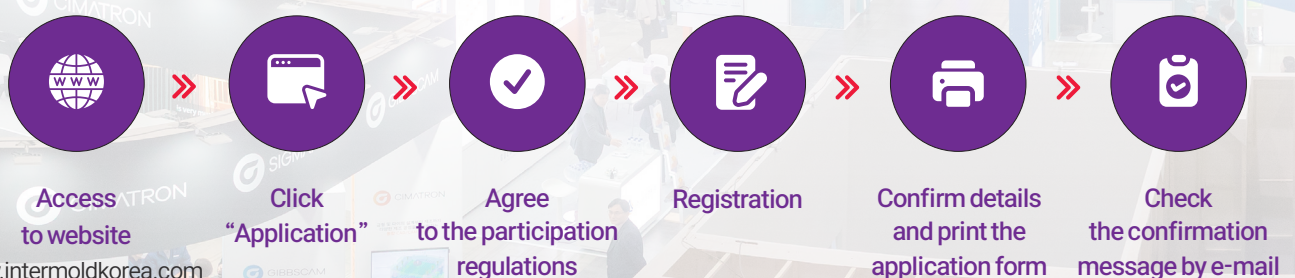
## How to pay

- **Application fee** : Please pay 30% of the participation fee upon application
  - **Payment of Balance** : You must pay the balance of the participation fee, the rental fee for utility services and so on by January 31, 2027.
  - **Banking information**
    - Account number : Industrial Bank of Korea 221-000047-01-017
    - Receiver : Korea Die & Mold Industry Cooperative
    - Swift code : IBKOKRSE
- ※ If paying via online transfer, please submit a copy of the remittance.

## Booth Allocation

Booth allocations will be divided by item category and done arbitrarily by the organizer based on the order of application fee payments taking into account exhibition space and its characteristics.

## Application Procedure



# Booth Construction & Utilities

## Shell-scheme Type

The organizer’s official contractor will provide standardized booth construction exclusively for companies selecting the shell scheme option.

The booth design shown on the right is a sample and may be subject to change.

※ Installation Cost : US\$ 800 per booth



< Shell-scheme Type >

## Raw-space Type

Raw space includes floor space only. Exhibitors selecting this option must hire a KINTEX-registered contractor at their own expense to design and construct the booth.

## Utility Services

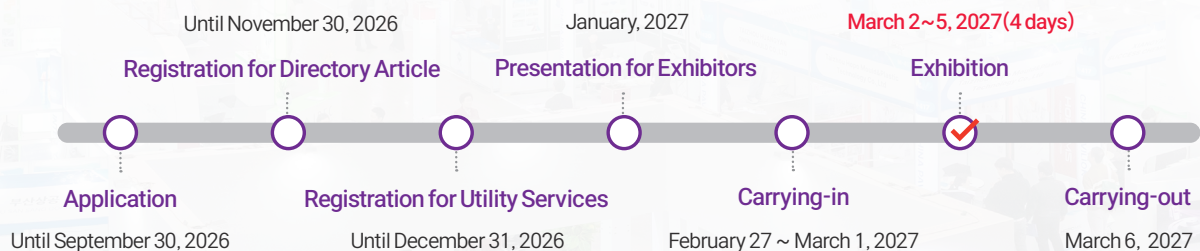
(Unit : US\$)

Services	Unit	Details	Price
Electricity	Per kW	Single-phase 220V, 60Hz	100
		Three-phase 220V·380V, 60Hz	
Compressed-air	Per line	ø9mm, 8kg/cm <sup>2</sup>	250
		ø15mm, 8kg/cm <sup>2</sup>	350
		ø20mm, 8kg/cm <sup>2</sup>	450
Water supply/drainage	Per line	ø15mm, ø25mm, 4kg/cm <sup>2</sup>	200
Telephone	Per line	International	200
Internet	Per port	-	250
Bar code system	Per EA	One-way terminal	300

※ 1) For use of the utility services, exhibitor should apply online before December 31, 2026.

2) Official supplier assigned by organizer will manage all utility services and the price is including installation and usage fee.

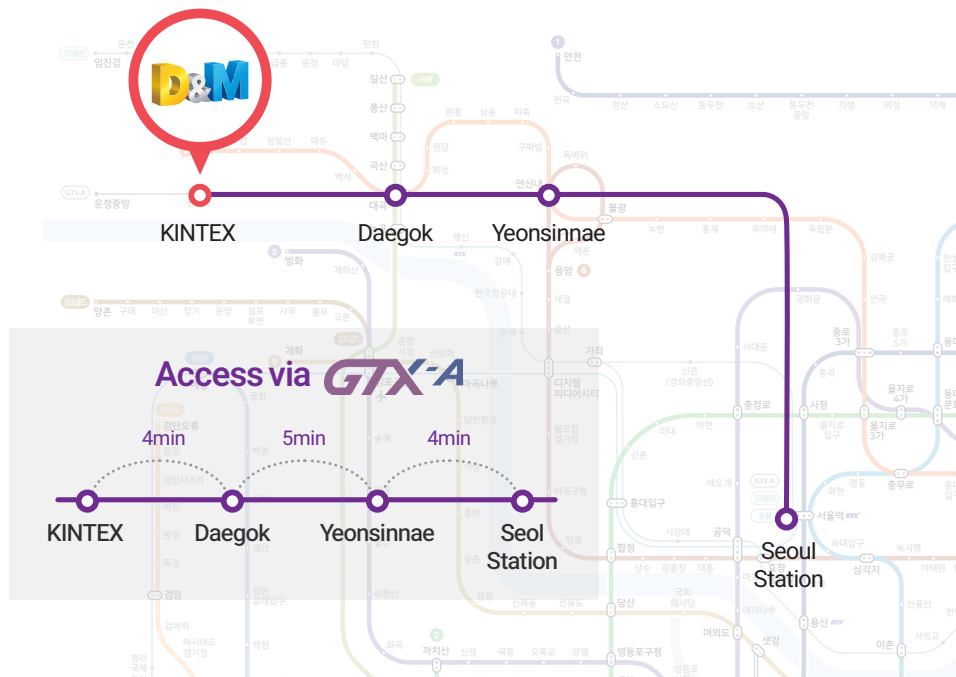
## INTERMOLD KOREA 2027 Key Schedule



For further detail information, please check the exhibition management guideline at official website.  
([www.intermoldkorea.com](http://www.intermoldkorea.com))

AI meets the traditional manufacturing platform,  
driving innovation and creating new value across the industry.

## INTERMOLD KOREA 2027



### INTERMOLD KOREA Secretariat

**Address** 49-6, Oido-ro, Siheung-si, Gyeonggi-do, 15014 Republic of KOREA

**TEL** +82-2-783-1711(Rep.) **Website** [www.intermoldkorea.com](http://www.intermoldkorea.com)

**FAX** +82-2-784-5937 **E-mail** [koreamold@koreamold.com](mailto:koreamold@koreamold.com)



**Website**



**Youtube**



**Kakao Business**